



GEORGIAN NATIONAL
UNIVERSITY SEU
COLLEGE OF MEDICINE

RANKED
AMONGST
TOP 5
EUROPEAN
UNIVERSITY
CAMPUSES

GEORGIA'S BIGGEST & THE MOST DEMANDED UNIVERSITY



WELCOME
TO THE EUROPE'S
**ONE OF THE
BIGGEST AND
ULTRA MODERN
UNIVERSITY**

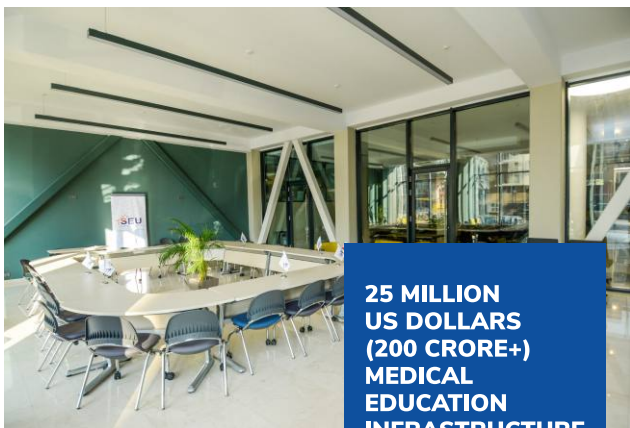


Georgian National University, SEU



THIS UNIVERSITY
IS SPREAD ACROSS
85000 SQUARE METERS
(21 ACRES).











ULTRAMODERN CLASS ROOM









**Robotic-Surgical
Training
World-Class
Laboratories**





6+
**International
Research
Establishments**





Highest Honours by Government as National University



CLINICAL ROTATION & HOSPITAL AFFILIATIONS

The Combined Hospital
BED CAPACITY is

5300+





High Technology Medical Centre,
University Clinic



Central Republican Hospital



Innova Medical Center



Enmedic Hospital



Chichua Medical Center Mzera



S. Khechinashvili University
Hospital

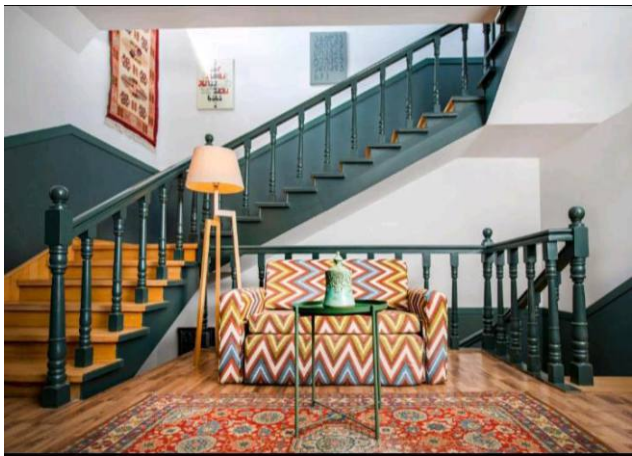
HOSTEL



ATMIA
HOSTEL
YOUR SECOND HOME

The logo features a stylized 'A' icon on the left, composed of two curved lines. To its right, the words 'ATMIA' and 'HOSTEL' are stacked in a bold, sans-serif font. Below 'HOSTEL', the tagline 'YOUR SECOND HOME' is written in a smaller, all-caps font.

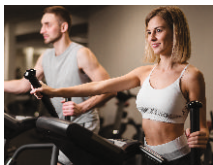






STUDENT LIFE AT SEU







TBILISI CITY TOUR



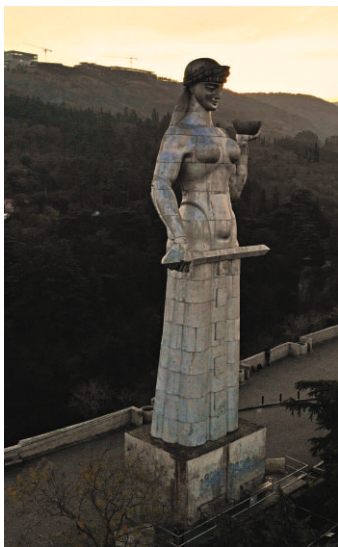


TBILISI

**GEORGIA'S MOST PLEASANT CITY &
DEFINITELY STUDENT'S SWEETHEART!**









GEORGIAN NATIONAL UNIVERSITY - SEU
**Receives Highest Honours and has been
Granted Unconditional Authorization**

ABSOLUTE AUTHORITY & LEADER
the only University in
Georgia to get this honours.

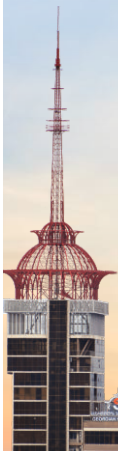
Foreign Experts from
WFME (World Federation for Medical Education) gave



to College of Medicine

Comments from Authorities

Really a World-Class Infrastructure,
SEU it's Future for Quality Medical Education



Congratulations!

**PRIDE
OF
SEU**



**LASHA
BEKAURI**

Student of Georgian National University - SEU of Georgia
WINS GOLD - TOKYO OLYMPICS 2020

CREATING NEW BENCHMARK FOR MEDICAL EDUCATION

**GEORGIAN NATIONAL
UNIVERSITY - SEU**



SEU Vice-Rector Ana Pirtskhalashvili paid an official visit to the University of Berlin and Brandenburg - bbw University of Applied Sciences, Germany. She was hosted by Sasha Flemintz, head of the bbw gruppe, the founding institution of bbw University.

During the meeting a close partnership between SEU and University of Berlin and Brandenburg - bbw University of Applied Sciences was agreed to implement joint programs, trainings, research activities & clinical rotations.

Ana Pirtskhalashvili from SEU was elected a member of the Innovation Council of the Institute for Educational Research and Administration of the University of Berlin and Brandenburg - bbw University of Applied Sciences.

University of Berlin and Brandenburg - bbw University of Applied Sciences is one of the largest private universities in Berlin and Brandenburg - Germany.



**Every Student Joining
Georgian National University - SEU
with Atmia Education
gets complimentary**

PERSONAL SSD LAPTOP

This Highly Advanced Device is Integrated with SEU's World-Class International Awarding Wining Online Platform along with Atmia's Gold Standard Online Platform



ALSO IT FEATURES:

**ACCESS TO
E-LIBRARY**

Access to Researches directly integrated to Research Centre's Plethora of Medical Researches

**Instant
doubt
resolution**

Prepare for exams like USMLE, PLAB and NEXT

Attend Personalised extra classes as recommended by the professor.

We are Creating a New Benchmark in Medical Education

and You are going to Experience the all-new technological advancements.

Georgia & India Excellent Bilateral Relation





9 Tsinandali Street, Tbilisi, Georgia.

www.seu.edu.ge



ATMIA EDUCATION[®]
Excellence is our Passion
ISO 9001:2008 Certified Education Consultancy

30 YEARS OF
SUCCESS

TRUSTED BY
5000+
STUDENTS

**THE GOLD STANDARD FOR
MBBS (MD) ABROAD**

TIMES
LEADING
ICONS
2021

**Awarded & Honoured
as LEADING INSTITUTE
#1 FOR MBBS ABROAD**
by Times of India,
India's largest media house.

Forbes

Proud to be Featured & Honoured
by FORBES World's Biggest Media
Company.

WE ARE ACCREDITED BY



European Association for
International Education
European Association for
International Education
Accreditation No: 218986



World's Largest International
Association
Accreditation No: 223985



Partners with federal
government agencies, education
bodies and community advocacies
Accreditation No: 00277804

WE ARE NOW IN 9 STATES & 20 CITIES ACROSS INDIA

GUJARAT: Rajkot | Ahmedabad | Anand
Vadodara | Surat | Gandhidham | Vapi
MAHARASHTRA: Mumbai | Pune | Nagpur
KERALA: Trivandrum | Kochi | Kozhikode

RAJASTHAN: Jaipur | Jodhpur
WEST BENGAL: Kolkata
TAMILNADU: Chennai

UP: New Delhi
MP: Indore
J&K: Jammu

ABROAD:
PHILIPPINES: Cebu
GEORGIA: Tbilisi

FOR ADMISSION & SUPPORT: (+91) 69004-69004

info@atmiaeducation.com

www.atmiaeducation.com

[f](https://www.facebook.com/atmiaeducation) [@](https://www.instagram.com/atmiaeducation) [t](https://www.twitter.com/atmiaeducation) /atmiaeducation